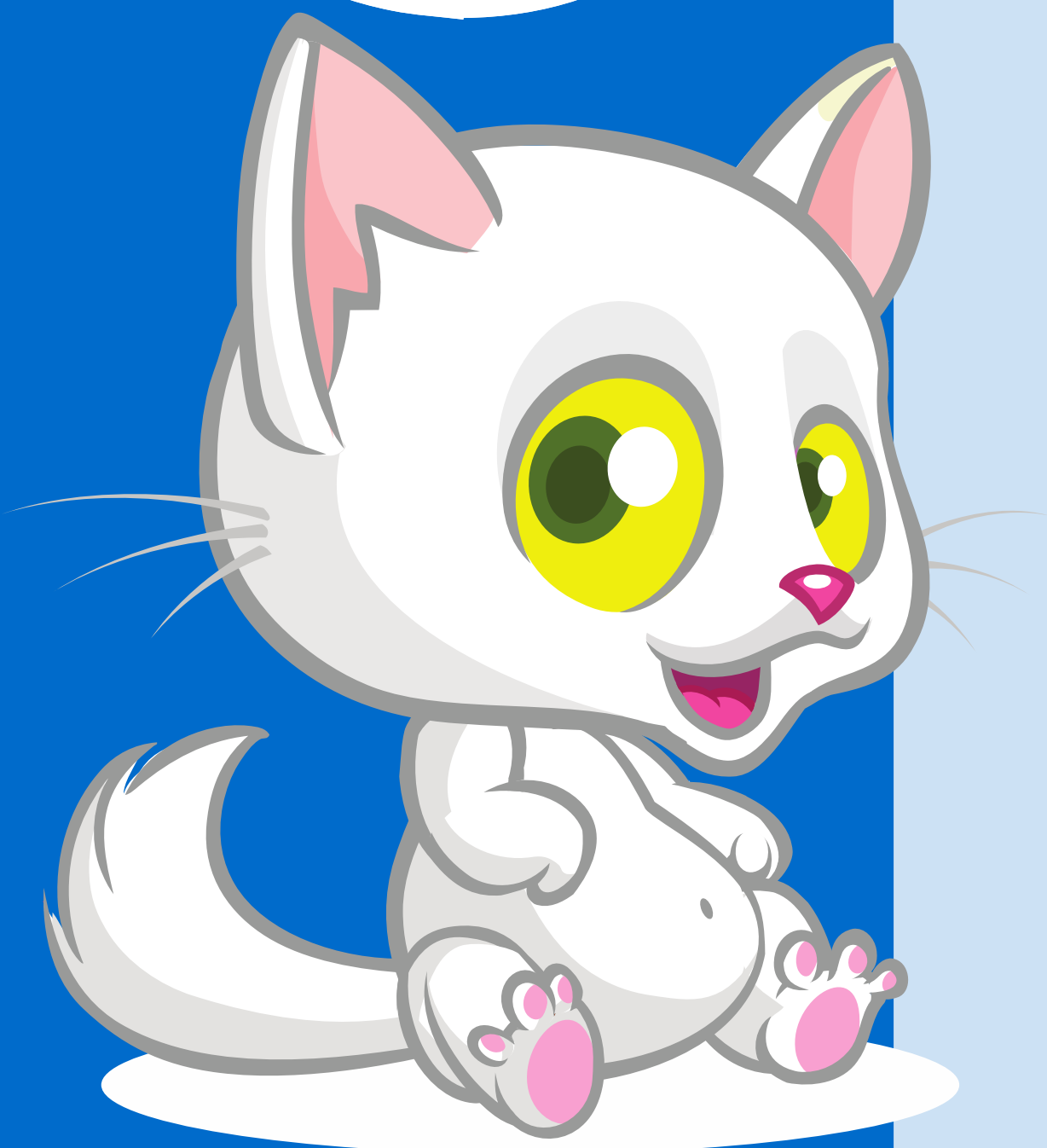


8 x



$$1 \times 8 = 8$$

$$2 \times 8 = 16$$

$$3 \times 8 = 24$$

$$4 \times 8 = 32$$

$$5 \times 8 = 40$$

$$6 \times 8 = 48$$

$$7 \times 8 = 56$$

$$8 \times 8 = 64$$

$$9 \times 8 = 72$$

$$10 \times 8 = 80$$

$$11 \times 8 = 88$$

$$12 \times 8 = 96$$